

Stoke Holy Cross Primary School

Moving up into Class 6



September 2020

You have been in Class 5 for nearly a year and soon it will be time for you, your friends and classmates to move up into Class 6.

Mr Berry will be the Class Teacher



You will also have Teaching Assistants to help you with your work.

Starting School in September.

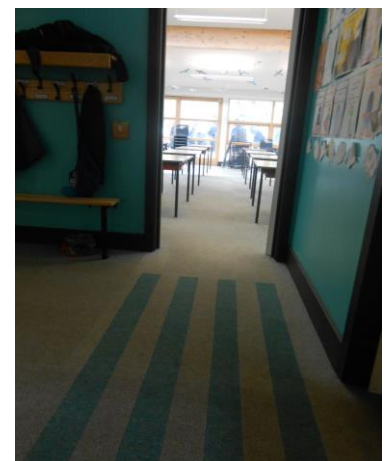
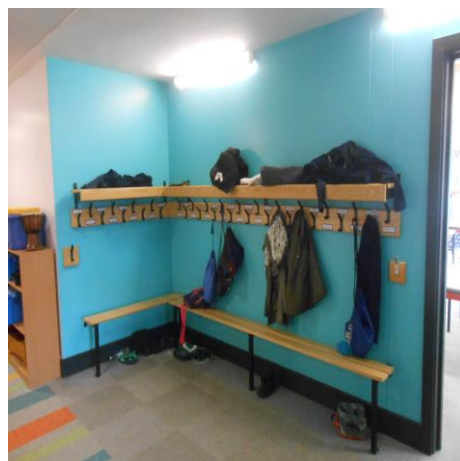
When you arrive at school, you will say goodbye to the adult you're with, walk through the side gate and meet with your friends on the terrace behind the KS2 classrooms.



When the bell rings, you will line-up beside the Blue Door of Class 6.



You will then follow the children and enter the school through the grey side door; hang your coat, bag and place your lunch box in the blue cloakroom where you'll find your name. You will then follow the blue lines on the carpet into the classroom.





Apart from the change in colour, the classroom looks similar to the previous classes. However, to begin with you might not know where the equipment is kept, please raise your hand and ask if you need something. You may also bring in your own pencil case, not too big though, as it has to fit inside your tray. Some children may be worried that the work is going to be too difficult; the teacher will choose work that is interesting, challenging, yet achievable to all.

First thing in the morning, the teacher will take the register and then ask you what type of lunch you're having.

The menu will be the same as in previous years (meat/vegetarian/jacket potato) or if you wish, you can bring in your own packed lunch from home.



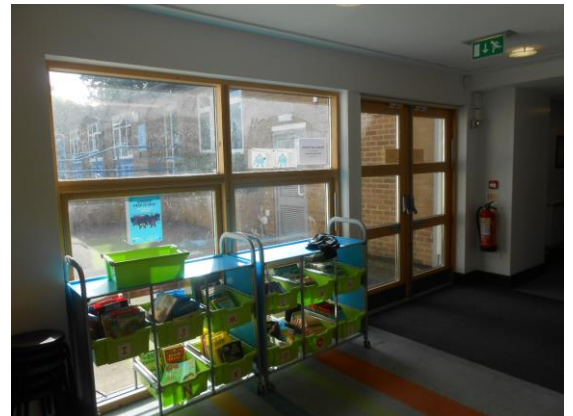
During Year 6, you also have the chance to take on some job responsibilities: Register Team, Library Team, Hall Team, Play Leaders, House-Point Counters, House/Vice Captains as well as School Council and Green Team.

There will be homework in Year 6, but the teacher will explain to you what you have to do and when it should be brought into school.

The day finishes at 3.15pm; you collect your things from the cloakroom and wait for a Member of Staff to open the exit door.

This door must **only** be opened by a Member of Staff as it is alarmed.

You will meet your family member at the front of the school.



Although there are some changes as you move to Year 6, it is fine when you get used to it. Everyone is happy to help. So, if you are feeling anxious, just tell someone and they will try to help you to sort the problem.

Remember - you can use always your PATHS faces to show how you are feeling.

Transition into Class 6

Things I'm looking forward to	Things I'm apprehensive about



Transition into Class 6

S Y W A S X U G C K Z A H L X C
R R M N F N N G I A C G A E U O
O R E E Y R I N F I M I H A S Z
T E T T Z N G A R H T X Z D Q X
I B J S L S V E T N H L R E I T
N R I L W E M I E P C T U R C G
O M C O N A H D C O A Z V S Z Q
M S O D R V I S Q T C C U H N L
R D E N S S F G N G O I J I O I
E I B N E N U X Q O I R B P H E
T E R R H B B S L X S P I J C P
S W P L A Y L E A D E R S A W Z
I L L A B T O O F T W Q E F N C
G E Q J K K W K G Y S E V D F S
E S G Q A Y S Z Z K O A I X N R
R C C Y W W B R Z X C E D U O A

AMERICA

DENS

LEADERSHIP

REGISTERMONITORS

VICTORIANS

ANDERSONSHELTERS

FOOTBALL

MRBERRY

RESIDENTIAL

CAPTAINS

KINGSWOOD

PLAYLEADERS

SATS

